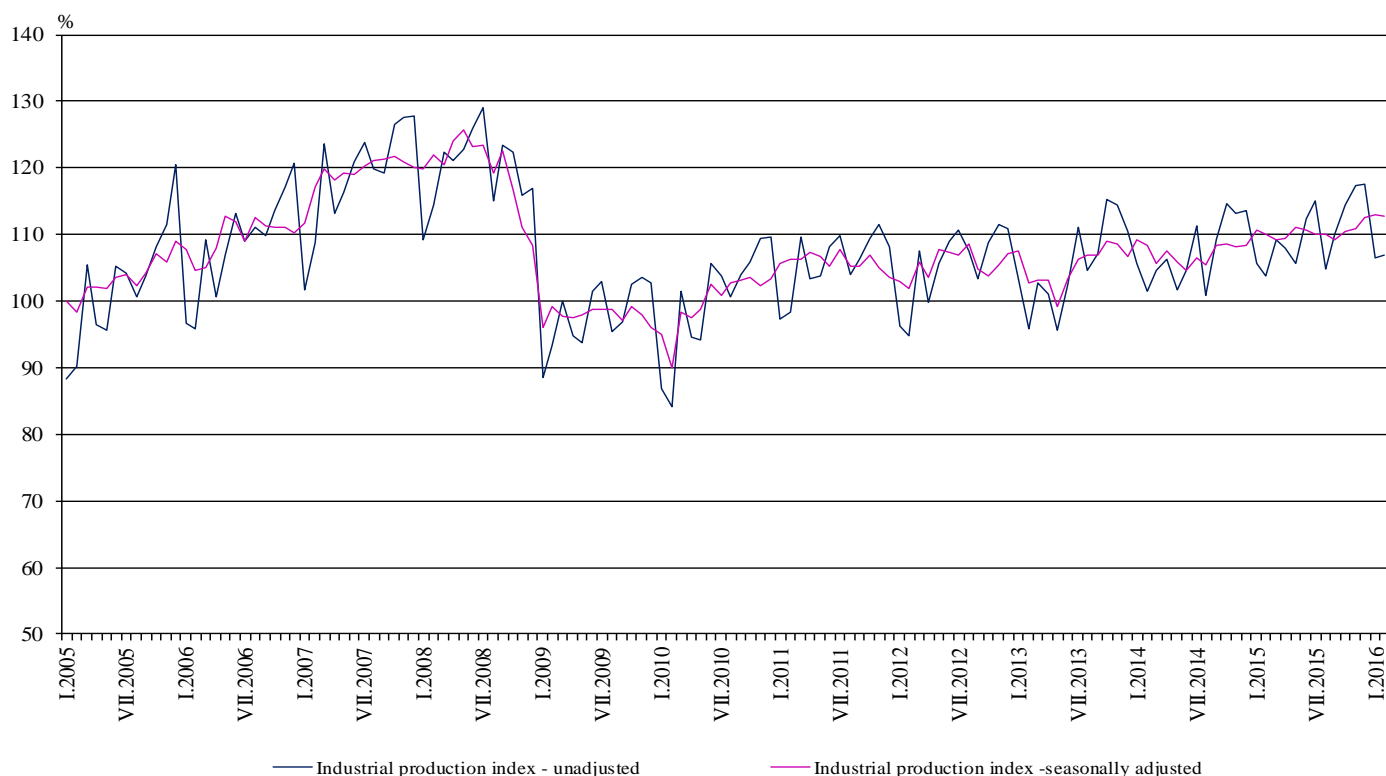


INDUSTRIAL PRODUCTION INDICES IN FEBRUARY 2016¹

According to the preliminary data the Industrial Production Index², seasonally adjusted³, decreased by 0.2% in February 2016 as compared to January 2016.

In February 2016 working day adjusted⁴ Industrial Production Index rose by 2.1% in comparison with the same month of 2015.

Figure 1. Industrial Production Indices (2010 = 100)



¹ February 2016 data are preliminary.

² Monthly Industrial Production and Industrial turnover indices measure changes in production and turnover values of industrial enterprises. This information can be used to assess the current economic development and for short-term forecasts. Indices do not measure the actual production level, it aims to measure the average change in value of production between two points of time. Indices are compiled on the base of information collected through representative sampling survey on industrial enterprises. The sample covers enterprises with annual turnover more than 97% of total turnover in industry.

Industrial production indices are calculated at constant base year that is to say they are weighted with the structure of the value added at factor costs in the base year.

³ Seasonal adjustment is a statistical method, which eliminates the seasonal component of time series.

⁴ Working day adjustment is an adjustment for variations caused by calendar effects, different number of calendar and working days in the months, national holidays and outliers (for example the presence of more non-working days in May could contribute to the decline in the production in some activities).



Monthly comparisons

In February 2016 as compared to January 2016, the seasonally adjusted Industrial Production Index decreased in the electricity, gas, steam and air conditioning supply by 3.7% and in the mining and quarrying industry by 1.3%, while in the manufacturing an increase by 1.0% was seen.

The most significant increases of production in the manufacturing were registered in the manufacture of chemicals and chemical products by 9.3%, in the manufacture of other transport equipment by 8.9%, in the manufacture of wood and of products of wood and cork, except furniture; manufacture of articles of straw and plaiting materials and in the manufacture of paper and paper products by 7.9%, in the manufacture of textiles by 7.7%. There were decreases in the manufacture of fabricated metal products, except machinery and equipment by 17.3%, in the repair and installation of machinery and equipment by 11.9%, in the manufacture of tobacco products by 3.3%.

**Figure 2. Changes of Industrial Production Indices compared to the previous month
(Seasonally adjusted)**



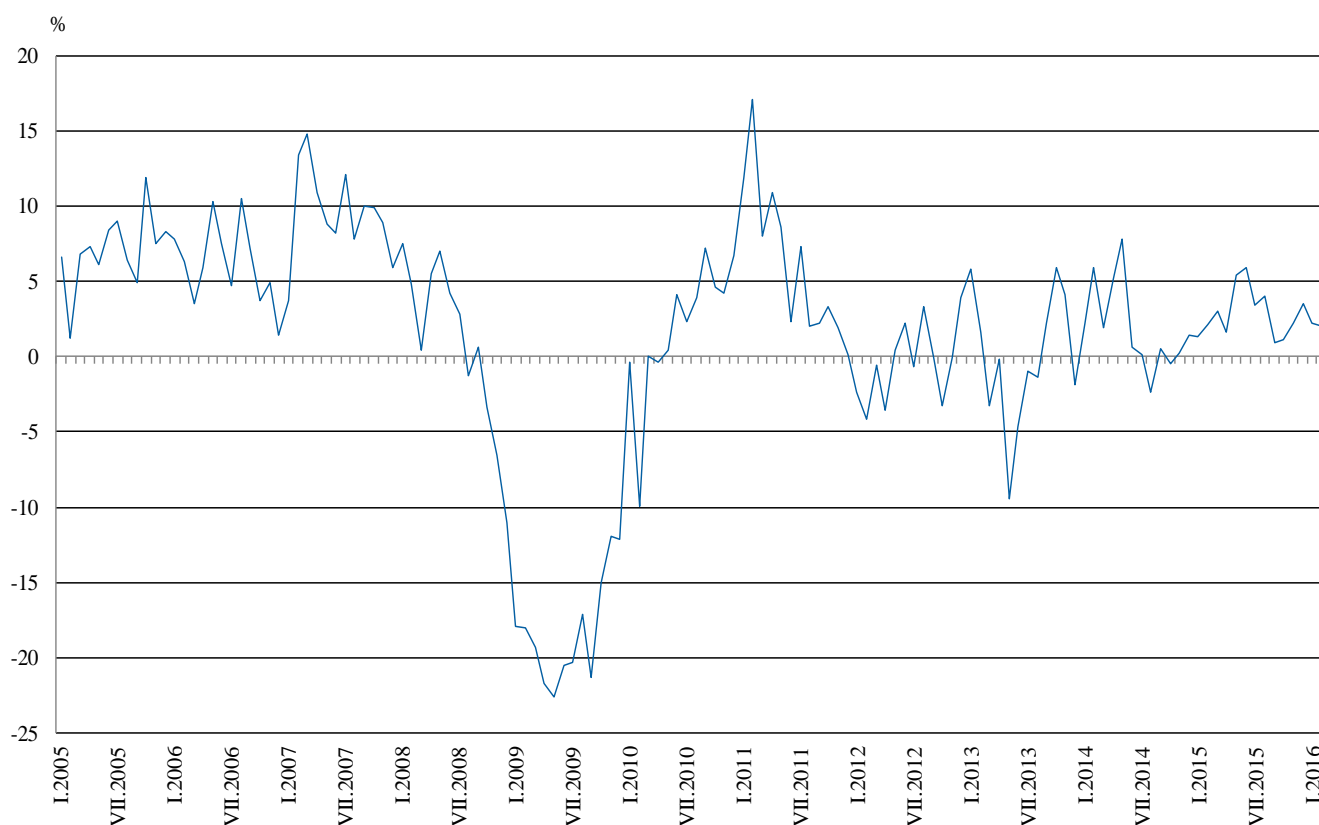


Annual comparisons

On annual basis in February 2016 Industrial Production Index calculated from working day adjusted data increased in the manufacturing by 5.7% and in the mining and quarrying industry by 2.0%, while in the electricity, gas, steam and air conditioning supply a decrease by 5.2% was registered.

In the manufacturing, the more significant increases compared to the same month of the previous year were seen in the manufacture of textiles by 20.0%, in the manufacture of basic pharmaceutical products and pharmaceutical preparations by 19.6%, in the manufacture of electrical equipment by 14.0%, in the manufacture of chemicals and chemical products and in the manufacture of other non-metallic mineral products by 11.7%. Decreases were registered in the manufacture of basic metals by 15.8%, in the repair and installation of machinery and equipment by 12.3%, in the manufacture of computer, electronic and optical products by 6.8%, in the manufacture of leather and related products by 5.4%.

Figure 3. Changes of Industrial Production Indices compared to the same month of the previous year (Working day adjusted)



The final data on Industrial Production and Turnover Indices for December 2015 can be found on the NSI website: <http://www.nsi.bg/en>.



Annex

Table 1
Changes of Industrial Production Indices compared to the previous month^{1,2}

(Per cent)

Economic Activities	NACE.BG - 2008	2015				2016	
		IX	X	XI	XII	I	II
Industry	B_TO_E36	-0.8	1.1	0.5	1.5	0.4	-0.2
Mining and quarrying	B	1.8	-3.2	3.1	0.2	1.9	-1.3
Mining of coal and lignite	B05	1.2	-23.6	11.0	10.6	-3.7	-8.7
Extraction of crude petroleum and natural gas	B06	28.3	-2.9	204.9	6.0	-7.9	4.7
Mining of metal ores	B07	10.4	0.3	10.2	-10.5	7.5	-4.6
Other mining and quarrying	B08	1.6	6.6	-8.7	19.0	-23.3	22.1
Manufacturing	C	-0.1	2.2	0.7	1.4	-0.6	1.0
Manufacture of food products	C10	0.5	3.0	-1.3	-0.7	5.0	-2.9
Manufacture of beverages	C11	-2.8	1.4	0.8	-2.7	7.2	0.9
Manufacture of tobacco products	C12	-8.0	13.0	8.8	6.4	3.3	-3.3
Manufacture of textiles	C13	1.7	7.0	-5.1	-1.6	2.4	7.7
Manufacture of wearing apparel	C14	4.6	6.6	-5.3	3.3	-0.6	-2.2
Manufacture of leather and related products	C15	0.8	-6.3	-3.8	4.2	0.1	0.5
Manufacture of wood and of products of wood and cork, except furniture; manufacture of articles of straw and plaiting materials	C16	0.0	-0.1	7.0	0.1	-6.8	7.9
Manufacture of paper and paper products	C17	11.0	2.9	-0.9	-8.8	-4.4	7.9
Printing and reproduction of recorded media	C18	-0.4	3.6	14.9	-12.2	11.8	0.1
Manufacture of coke and refined petroleum products	C19	2.1	5.7	7.3	-7.4	6.6	18.2
Manufacture of chemicals and chemical products	C20	-10.0	2.7	-12.2	-2.5	6.3	9.3
Manufacture of basic pharmaceutical products and pharmaceutical preparations	C21	1.8	2.0	1.3	0.7	-0.1	4.9
Manufacture of rubber and plastic products	C22	2.8	2.9	-1.8	2.1	5.6	2.2
Manufacture of other non-metallic mineral products	C23	0.6	0.1	3.3	4.0	-5.3	-0.1
Manufacture of basic metals	C24	-4.4	1.4	0.2	0.6	-2.7	-1.8
Manufacture of fabricated metal products, except machinery and equipment	C25	0.2	4.9	9.8	-0.7	18.3	-17.3
Manufacture of computer, electronic and optical products	C26	-6.5	11.1	-5.6	-6.2	14.3	-9.9
Manufacture of electrical equipment	C27	-3.0	3.1	0.3	-3.1	3.2	5.9
Manufacture of machinery and equipment n.e.c.	C28	-1.7	0.6	-3.0	2.0	2.4	0.2
Manufacture of motor vehicles, trailers and semi-trailers	C29	11.9	-1.2	-2.1	0.3	0.7	5.8
Manufacture of other transport equipment	C30	5.6	-2.6	0.3	-5.3	-5.3	8.9
Manufacture of furniture	C31	11.5	-5.2	2.3	-1.6	4.1	-1.5
Other manufacturing	C32	-4.2	5.2	2.8	10.5	7.7	-10.2
Repair and installation of machinery and equipment	C33	-7.4	16.4	4.5	-15.0	8.8	-11.9
Electricity, gas, steam and air conditioning supply	D	-3.7	-0.7	-1.5	2.6	3.3	-3.7
Electricity, gas, steam and air conditioning supply	D35	-3.7	-0.7	-1.5	2.6	3.3	-3.7

¹ Seasonally adjusted.

² ".." - Confidential data.



Table 2

Changes of Industrial Production Indices compared to the same month of the previous year^{1,2}
(Per cent)

Economic Activities	NACE.BG - 2008	2015				2016	
		IX	X	XI	XII	I	II
Industry	B_TO_E36	0.9	1.2	2.2	3.5	2.2	2.1
Mining and quarrying	B	9.2	-10.1	1.7	-0.9	5.9	2.0
Mining of coal and lignite	B05	26.0	-11.8	0.9	11.2	-3.2	-13.1
Extraction of crude petroleum and natural gas	B06	29.7	41.8	296.1	152.1	167.7	202.2
Mining of metal ores	B07	0.2	-10.9	-2.9	-15.4	11.4	4.7
Other mining and quarrying	B08	-2.2	3.0	-6.1	16.4	-11.9	14.0
Manufacturing	C	0.7	4.5	5.7	7.2	4.5	5.7
Manufacture of food products	C10	-1.9	0.6	-3.0	-1.5	-0.1	-4.7
Manufacture of beverages	C11	4.4	11.1	9.7	0.2	6.0	3.5
Manufacture of tobacco products	C12	-28.3	-20.7	-6.7	-8.1	9.4	-1.4
Manufacture of textiles	C13	-3.1	5.9	4.6	-3.2	-0.8	20.0
Manufacture of wearing apparel	C14	-0.2	10.0	4.6	10.1	7.6	5.7
Manufacture of leather and related products	C15	1.9	-10.4	-21.9	-13.9	-8.5	-5.4
Manufacture of wood and of products of wood and cork, except furniture; manufacture of articles of straw and plaiting materials	C16	5.2	-3.3	11.0	13.9	-5.3	-1.7
Manufacture of paper and paper products	C17	10.7	15.7	16.2	8.0	-3.0	9.1
Printing and reproduction of recorded media	C18	5.0	8.4	23.9	9.7	18.5	15.6
Manufacture of coke and refined petroleum products	C19	-14.3	-5.7	11.1	30.3	3.3	61.1
Manufacture of chemicals and chemical products	C20	0.0	-10.7	-7.9	-8.7	-7.1	11.7
Manufacture of basic pharmaceutical products and pharmaceutical preparations	C21	7.9	4.4	9.5	0.9	0.6	19.6
Manufacture of rubber and plastic products	C22	2.1	4.2	6.2	12.0	6.8	11.4
Manufacture of other non-metallic mineral products	C23	15.7	12.2	14.5	23.6	8.1	11.7
Manufacture of basic metals	C24	-18.2	-10.1	-0.5	-10.7	-16.8	-15.8
Manufacture of fabricated metal products, except machinery and equipment	C25	-2.4	15.6	23.9	23.3	44.5	10.4
Manufacture of computer, electronic and optical products	C26	1.9	9.2	9.7	4.4	19.6	-6.8
Manufacture of electrical equipment	C27	11.7	11.9	13.5	10.9	5.1	14.0
Manufacture of machinery and equipment n.e.c.	C28	-6.6	-1.8	-13.8	2.2	-6.3	-3.1
Manufacture of motor vehicles, trailers and semi-trailers	C29	13.5	4.6	8.7	3.5	2.9	6.9
Manufacture of other transport equipment	C30	53.9	29.7	29.6	21.4	-22.8	15.4
Manufacture of furniture	C31	8.5	0.9	4.2	9.4	6.2	1.3
Other manufacturing	C32	12.3	27.3	27.2	43.8	29.8	31.4
Repair and installation of machinery and equipment	C33	-17.7	8.4	-5.5	5.8	-5.4	-12.3
Electricity, gas, steam and air conditioning supply	D	-2.5	-6.1	-7.2	-4.0	-5.2	-5.2
Electricity, gas, steam and air conditioning supply	D35	-2.5	-6.1	-7.2	-4.0	-5.2	-5.2

¹ Working day adjusted.

² "..." - Confidential data.



Table 3

Industrial Production Indices¹
(Seasonally adjusted, 2010 = 100)

NACE.BG - 2008	2015											2016	
	II	III	IV	V	VI	VII	VIII	IX	X	XI	XII	I	II
B_TO_E36	110.0	109.1	109.5	111.0	110.6	110.1	110.1	109.2	110.4	110.9	112.5	113.0	112.8
B	99.1	97.6	98.2	99.1	99.8	99.1	98.6	100.3	97.1	100.1	100.3	102.2	100.9
B05	115.9	104.2	119.7	107.9	106.8	115.5	123.0	124.4	95.1	105.6	116.8	112.6	102.8
B06	82.0	72.9	69.3	63.0	65.0	66.2	63.9	82.0	79.6	242.6	257.2	236.8	247.8
B07	85.3	86.3	84.3	94.7	99.8	88.3	79.8	88.2	88.4	97.4	87.1	93.6	89.3
B08	107.9	108.4	110.4	112.1	119.9	119.1	109.9	111.7	119.1	108.8	129.4	99.2	121.1
C	113.3	112.2	111.7	114.8	114.5	114.3	113.8	113.6	116.2	117.0	118.6	117.9	119.1
C10	95.3	86.8	90.9	92.1	89.4	86.1	87.7	88.1	90.8	89.6	89.0	93.5	90.7
C11	102.7	96.3	100.9	101.2	100.3	100.5	101.0	98.3	99.6	100.4	97.7	104.7	105.6
C12	108.5	110.1	103.3	96.4	93.3	89.2	89.2	82.1	92.7	100.9	107.4	110.9	107.2
C13	101.2	99.3	102.8	110.1	108.5	110.5	106.9	108.8	116.4	110.5	108.7	111.3	119.9
C14	92.1	89.2	91.3	93.4	98.2	96.7	92.4	96.6	103.0	97.5	100.7	100.1	97.9
C15	78.5	75.7	81.7	71.6	74.2	80.4	77.8	78.4	73.5	70.7	73.7	73.7	74.1
C16	105.8	104.8	102.0	96.6	97.6	91.8	96.7	96.7	96.6	103.4	103.6	96.5	104.1
C17	117.5	125.5	114.6	122.3	126.0	118.2	119.3	132.5	136.2	135.0	123.1	117.6	126.9
C18	114.3	113.5	108.7	110.7	116.3	112.5	111.9	111.5	115.6	132.7	116.5	130.3	130.5
C19	92.4	101.4	105.9	102.5	100.9	94.4	89.8	91.7	96.9	103.9	96.2	102.6	121.3
C20	102.6	99.6	106.1	102.3	112.9	123.5	124.2	111.9	114.9	100.8	98.3	104.5	114.2
C21	135.3	152.6	151.6	147.7	143.1	147.1	143.0	145.6	148.5	150.5	151.5	151.4	158.9
C22	133.3	127.3	132.6	136.3	132.8	131.2	127.6	131.1	134.9	132.5	135.2	142.9	146.0
C23	117.7	121.8	121.9	129.5	128.8	129.3	127.6	128.4	128.5	132.8	138.2	130.9	130.8
C24	103.8	100.2	103.0	100.4	99.2	97.2	95.3	91.1	92.3	92.5	93.1	90.5	88.9
C25	128.0	115.1	113.0	128.6	120.4	127.8	128.8	129.1	135.4	148.7	147.6	174.7	144.4
C26	149.6	142.8	146.8	148.7	151.8	150.3	148.8	139.1	154.6	145.9	136.8	156.3	140.9
C27	140.3	144.6	140.5	151.3	135.8	146.4	147.4	143.0	147.4	147.8	143.3	147.9	156.7
C28	147.1	138.9	142.2	146.3	145.0	142.4	141.5	139.0	139.8	135.6	138.2	141.5	141.8
C29	158.4	155.5	154.3	149.9	156.8	160.5	145.4	162.7	160.8	157.4	157.8	158.9	168.1
C30	89.8	93.3	83.8	95.4	82.6	85.0	101.1	106.7	104.0	104.3	98.8	93.6	101.9
C31	129.1	118.2	130.9	126.2	121.2	126.1	119.3	133.0	126.1	129.0	126.9	132.1	130.1
C32	151.6	157.5	161.8	168.6	174.3	183.4	180.1	172.6	181.6	186.8	206.5	222.3	199.7
C33	88.5	96.8	83.7	93.8	91.8	93.3	86.3	79.9	93.1	97.3	82.7	90.0	79.3
D	106.8	107.0	109.9	107.2	105.8	104.2	105.7	101.8	101.0	99.5	102.0	105.3	101.4
D35	106.8	107.0	109.9	107.2	105.8	104.2	105.7	101.8	101.0	99.5	102.0	105.3	101.4

¹ "..." - Confidential data.



Table 4

Industrial Production Indices¹
(Working day adjusted, 2010 = 100)

NACE.BG - 2008	2013	2014	2015											2016	
	II	II	II	III	IV	V	VI	VII	VIII	IX	X	XI	XII	I	II
B_TO_E36	95.9	101.5	103.7	109.5	107.1	107.4	111.5	113.7	106.5	109.2	114.6	118.0	116.1	108.2	105.8
B	89.0	88.2	93.5	89.3	92.5	94.0	97.0	98.0	94.9	105.2	101.3	108.2	109.8	103.5	95.3
B05	86.9	98.7	114.1	94.2	104.3	90.3	83.4	106.6	121.9	132.9	117.6	118.0	136.8	128.0	99.1
B06	84.2	76.3	82.0	72.9	69.3	63.0	65.0	66.2	63.9	82.0	79.6	242.6	257.2	236.8	247.8
B07	91.7	85.1	85.3	86.3	84.3	94.7	99.8	88.3	79.8	88.2	88.4	97.4	87.1	93.6	89.3
B08	75.1	72.1	75.5	96.5	109.9	118.0	132.1	135.8	121.4	123.9	142.1	121.2	135.1	59.9	86.0
C	92.8	98.6	101.5	111.2	112.6	116.0	120.9	122.6	110.9	116.3	123.6	123.8	114.7	103.1	107.2
C10	74.5	75.3	83.0	85.4	87.8	89.4	91.4	87.1	90.0	95.0	100.3	96.5	92.9	78.9	79.1
C11	63.9	71.5	70.7	90.7	102.3	114.2	123.4	124.3	127.6	105.9	86.0	89.1	100.3	66.6	73.3
C12	93.5	93.0	85.4	114.6	104.3	104.7	106.1	107.0	89.0	88.9	90.9	97.3	109.3	85.0	84.2
C13	91.7	103.9	95.8	109.9	112.7	124.1	120.6	117.2	86.0	105.3	119.7	113.8	94.4	95.2	115.0
C14	98.8	98.4	90.0	83.5	85.5	86.4	105.2	110.2	92.6	92.8	103.8	98.2	100.5	104.8	95.2
C15	72.0	75.3	76.0	73.3	70.5	59.3	76.2	98.4	79.9	86.5	76.8	71.5	68.4	74.9	71.9
C16	80.2	90.5	89.0	102.2	100.0	96.4	106.0	101.5	98.6	103.9	107.8	112.5	99.0	75.1	87.4
C17	108.3	113.0	109.8	128.8	116.3	124.3	131.5	123.7	118.6	134.6	137.9	134.6	118.0	109.4	119.8
C18	87.1	95.6	102.7	110.9	105.8	108.5	119.7	111.3	107.2	113.5	123.1	149.2	129.6	112.9	118.8
C19	102.3	84.7	59.8	106.9	115.5	115.3	110.3	103.3	98.2	93.7	102.1	102.2	77.3	92.4	96.4
C20	91.2	91.9	95.6	109.2	109.9	102.4	117.6	124.8	117.8	112.3	113.8	104.0	96.3	97.0	106.7
C21	134.3	142.4	134.3	158.3	159.3	146.9	148.8	139.7	127.1	145.7	160.1	155.1	155.2	136.5	160.6
C22	95.8	109.7	115.3	126.3	132.4	138.6	144.6	144.9	128.0	139.9	150.4	138.1	115.5	120.8	128.4
C23	84.6	98.0	92.8	118.8	125.6	143.5	140.5	141.1	135.2	140.5	141.7	143.0	123.3	89.7	103.7
C24	88.4	102.1	100.3	90.0	121.8	105.0	92.6	118.6	92.1	76.7	103.4	98.2	70.9	93.9	84.4
C25	86.0	103.1	113.7	113.4	108.4	124.7	125.2	133.6	125.0	132.9	144.1	165.6	165.9	135.8	125.5
C26	132.8	115.0	138.7	148.2	144.5	150.5	159.6	154.1	129.9	139.8	158.6	153.7	150.0	139.7	129.3
C27	112.9	121.6	133.0	148.0	142.3	148.6	141.7	155.5	129.9	144.5	162.7	162.6	130.2	135.7	151.7
C28	124.2	132.3	141.1	147.5	145.1	145.6	156.8	149.7	127.8	141.7	143.8	143.4	129.3	125.4	136.7
C29	96.1	124.6	152.5	163.7	159.5	149.2	166.8	162.2	119.6	167.0	174.6	173.3	139.8	153.7	163.0
C30	77.7	73.4	79.8	101.5	87.3	115.6	90.4	88.0	81.4	97.2	101.1	96.9	103.7	72.0	92.1
C31	108.1	106.7	114.0	114.3	126.3	123.6	124.8	129.9	121.3	141.2	139.5	141.6	127.3	112.9	115.4
C32	125.3	130.6	129.9	158.5	157.9	169.3	197.8	188.1	184.0	182.4	210.9	195.7	178.3	188.4	170.7
C33	71.6	69.8	76.0	96.5	74.7	86.3	92.6	92.4	85.3	81.6	99.4	114.3	111.3	64.8	66.7
D	110.3	119.2	117.6	117.0	100.6	88.2	91.1	95.5	96.3	90.0	95.5	108.2	128.7	127.5	111.6
D35	110.3	119.2	117.6	117.0	100.6	88.2	91.1	95.5	96.3	90.0	95.5	108.2	128.7	127.5	111.6

¹ "..." - Confidential data.