

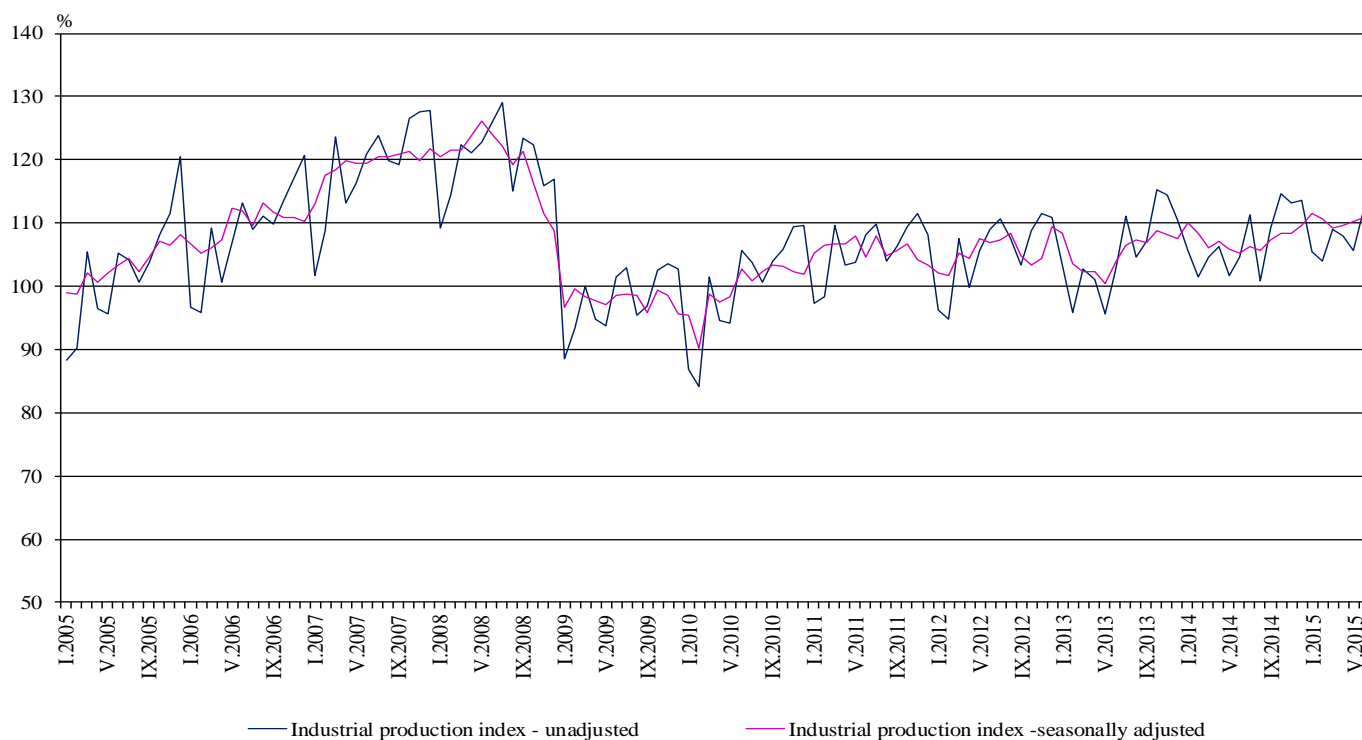


INDUSTRIAL PRODUCTION INDICES IN JUNE 2015¹

According to the preliminary data the Industrial Production Index², seasonally adjusted³, increased by 0.6% in June 2015 as compared to May 2015.

In June 2015 working day adjusted⁴ Industrial Production Index rose by 5.7% in comparison with the same month of 2014.

Figure 1. Industrial Production Indices (2010 = 100)



¹June 2015 data are preliminary.

² Monthly Industrial Production and Industrial turnover indices measure changes in production and turnover values of industrial enterprises. This information can be used to access the current economic development and for short-term forecasts. Indices do not measure the actual production level, it aims to measure the average change in value of production between two points of time. Indices are compiled on the base of information collected through representative sampling survey on industrial enterprises. The sample covers enterprises with annual turnover more than 97% of total turnover in industry.

Industrial production indices are calculated at constant base year that is to say they are weighted with the structure of the value added at factor costs in the base year.

³ Seasonal adjustment is a statistical method, which eliminates the seasonal component of time series.

⁴ Working day adjustment is an adjustment for variations caused by calendar effects, different number of calendar and working days in the months, national holidays and outliers (for example the presence of more non-working days in May could contribute to the decline in the production in some activities).

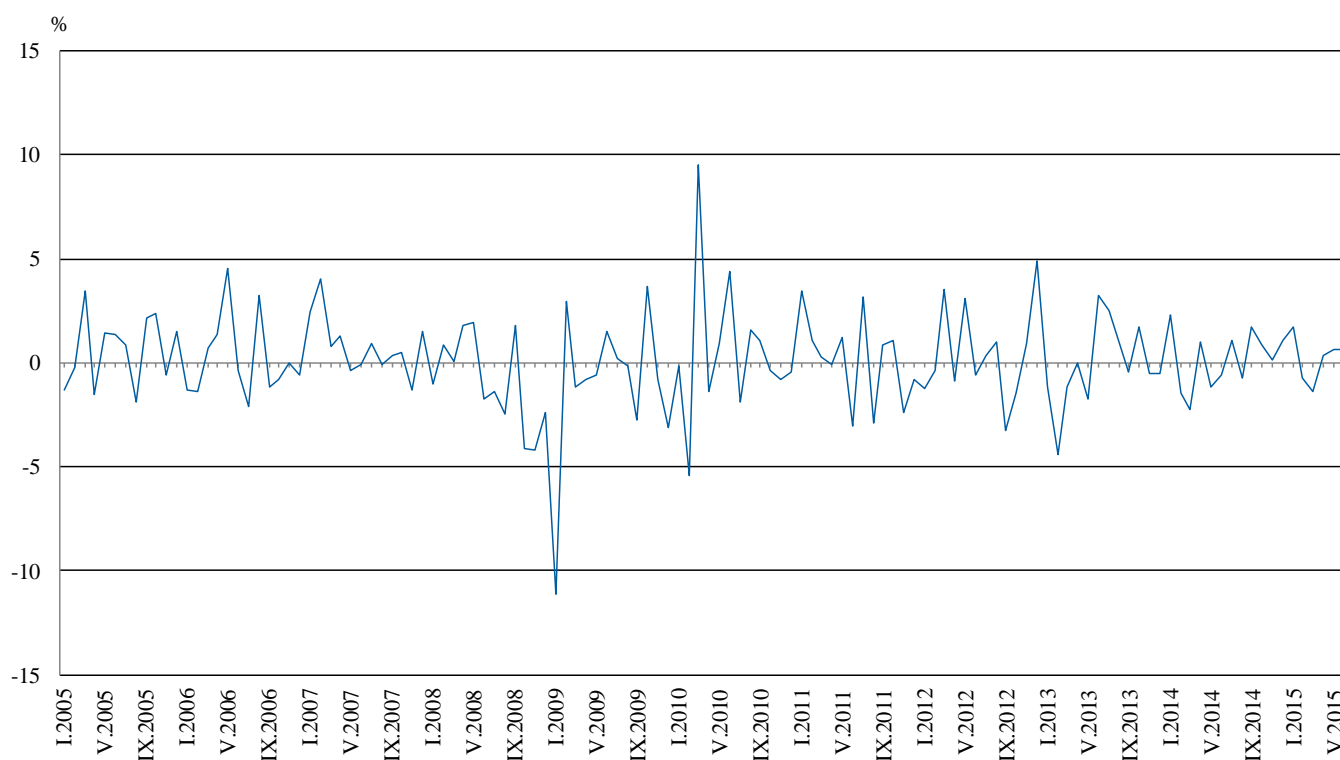


Monthly comparisons

In June 2015 as compared to May 2015, the seasonally adjusted Industrial Production Index increased in the mining and quarrying industry by 1.9% and in the manufacturing by 1.1%, while in the electricity, gas, steam and air conditioning supply a decrease by 1.4% was seen.

The most significant increases of production in the manufacturing were registered in the manufacture of chemicals and chemical products by 13.9%, in the printing and reproduction of recorded media by 11.2%, in the manufacture of wood and of products of wood and cork, except furniture; manufacture of articles of straw and plaiting materials by 6.4%, in the manufacture of paper and paper products by 5.8%. There were decreases in the manufacture of other transport equipment by 12.9%, in the manufacture of electrical equipment by 8.1%, in the repair and installation of machinery and equipment by 5.4%, in the manufacture of basic metals by 2.8%.

**Figure 2. Changes of Industrial Production Indices compared to the previous month
(Seasonally adjusted)**



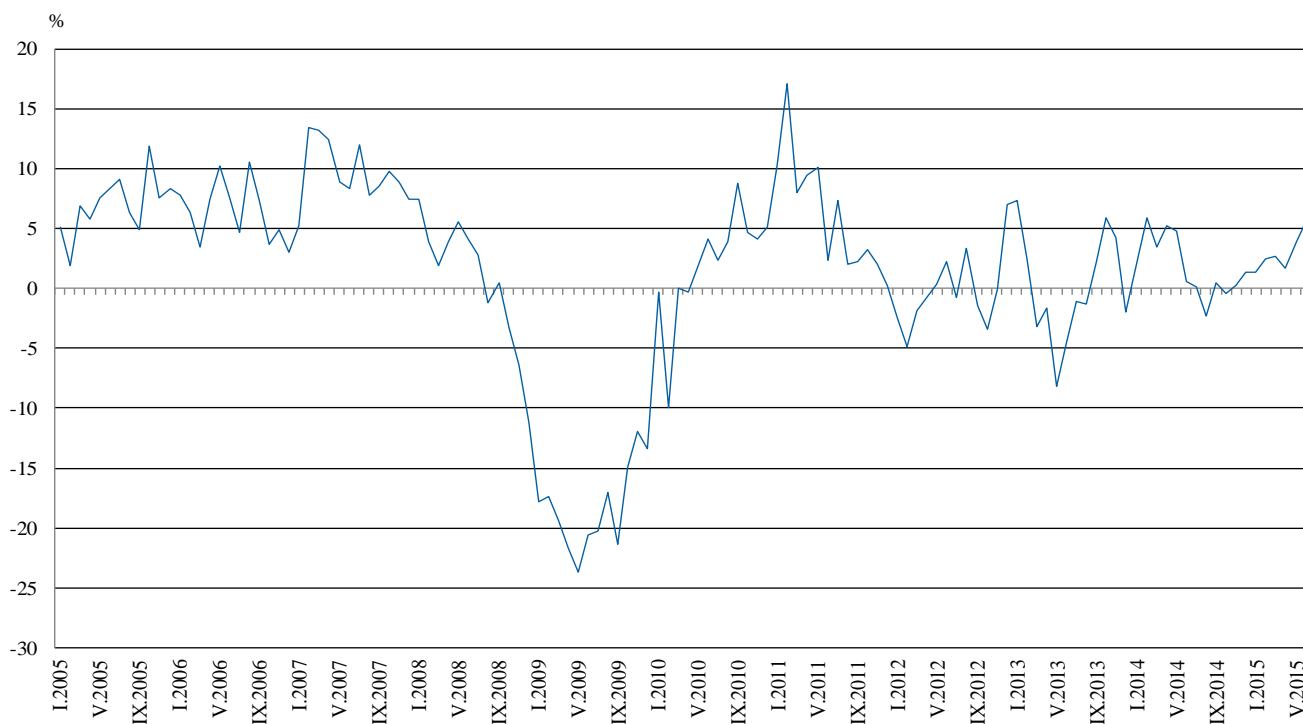


Annual comparisons

On annual basis in June 2015 Industrial Production Index calculated from working day adjusted data increased in the mining and quarrying industry by 6.6%, in the manufacturing by 6.4% and in the electricity, gas, steam and air conditioning supply by 3.0%.

In the manufacturing, the more significant increases compared to the same month of the previous year were seen in the manufacture of other non-metallic mineral products by 22.2%, in the printing and reproduction of recorded media by 15.8%, in the manufacture of motor vehicles, trailers and semi-trailers by 15.6%, in the manufacture of computer, electronic and optical products by 14.3%, in the manufacture of chemicals and chemical products by 8.0%. Decreases were registered in the manufacture of basic metals by 9.6%, in the manufacture of leather and related products by 3.8%.

Figure 3. Changes of Industrial Production Indices compared to the same month of the previous year (Working day adjusted)



The final data on Industrial Production and Turnover Indices for May 2015 can be found on the NSI website: <http://www.nsi.bg/en>.



Annex

Table 1
Changes of Industrial Production Indices compared to the previous month¹
(Per cent)

Economic Activities	NACE.BG - 2008	2015					
		I	II	III	IV	V	VI
Industry	B_TO_E36	1.7	-0.7	-1.4	0.4	0.7	0.6
Mining and quarrying	B	0.7	1.4	-6.1	3.2	0.9	1.9
of which:							
Mining of coal and lignite	B05	12.3	-0.6	-9.1	12.7	-11.1	3.0
Mining of metal ores	B07	-17.9	5.4	-2.7	-3.9	12.6	5.5
Other mining and quarrying	B08	-5.3	-2.2	2.5	1.1	1.9	7.0
Manufacturing	C	0.8	0.1	-1.1	-0.8	1.7	1.1
of which:							
Manufacture of food products	C10	2.6	2.7	-9.7	5.2	-4.3	-0.1
Manufacture of beverages	C11	5.2	1.1	-4.9	3.9	-1.7	-1.0
Manufacture of tobacco products	C12	-9.4	3.4	-1.5	-6.8	-4.6	-0.9
Manufacture of textiles	C13	-2.8	-9.5	-1.5	2.8	3.1	4.2
Manufacture of wearing apparel	C14	2.1	-4.1	-3.3	2.8	0.0	5.3
Manufacture of leather and related products	C15	-5.5	-5.6	-0.7	7.5	-12.8	3.1
Manufacture of wood and of products of wood and cork, except furniture; manufacture of articles of straw and plaiting materials	C16	2.3	4.8	1.2	-3.8	-7.8	6.4
Manufacture of paper and paper products	C17	3.1	-1.6	4.0	-9.9	6.2	5.8
Printing and reproduction of recorded media	C18	5.2	2.4	-0.6	-5.5	-1.3	11.2
Manufacture of chemicals and chemical products	C20	3.6	-9.9	-0.9	5.6	-6.6	13.9
Manufacture of basic pharmaceutical products and pharmaceutical preparations	C21	0.9	-11.5	12.9	-1.9	-4.5	-1.3
Manufacture of rubber and plastic products	C22	10.9	-1.1	-4.4	2.4	-0.7	1.5
Manufacture of other non-metallic mineral products	C23	-2.6	1.3	2.5	-2.5	8.4	2.0
Manufacture of basic metals	C24	2.7	-4.0	-4.5	10.4	-6.7	-2.8
Manufacture of fabricated metal products, except machinery and equipment	C25	4.4	1.7	-13.4	1.0	7.9	-1.8
Manufacture of computer, electronic and optical products	C26	5.1	9.4	-4.2	1.2	0.2	1.9
Manufacture of electrical equipment	C27	8.6	0.6	3.3	-2.9	3.3	-8.1
Manufacture of machinery and equipment n.e.c.	C28	12.2	-3.2	-5.7	1.4	0.2	2.3
Manufacture of motor vehicles, trailers and semi-trailers	C29	1.4	2.7	-2.5	-2.4	-2.8	3.9
Manufacture of other transport equipment	C30	45.8	-21.3	-0.9	-10.0	13.8	-12.9
Manufacture of furniture	C31	7.8	2.9	-8.2	9.4	-8.0	0.3
Other manufacturing	C32	19.6	-13.3	3.6	1.2	2.0	5.3
Repair and installation of machinery and equipment	C32	26.6	-6.5	6.7	-14.3	11.9	-5.4
Electricity, gas, steam and air conditioning supply	D	5.0	-4.3	-0.1	2.9	-2.5	-1.4
Electricity, gas, steam and air conditioning supply	D35	5.0	-4.3	-0.1	2.9	-2.5	-1.4

¹ Seasonally adjusted.



Table 2

Changes of Industrial Production Indices compared to the same month of the previous year¹
(Per cent)

Economic Activities	NACE.BG - 2008	2015					
		I	II	III	IV	V	VI
Industry	B_TO_E36	1.3	2.5	2.6	1.6	3.9	5.7
Mining and quarrying	B	-10.4	5.9	3.3	-0.8	1.4	6.6
of which:							
Mining of coal and lignite	B05	0.6	15.3	20.9	11.0	-7.6	29.4
Mining of metal ores	B07	-18.2	0.4	-5.0	-5.8	6.1	-2.2
Other mining and quarrying	B08	2.6	4.8	2.7	-3.6	7.9	16.1
Manufacturing	C	5.2	3.4	4.1	0.4	4.1	6.4
of which:							
Manufacture of food products	C10	4.5	9.8	-4.7	-0.6	0.5	-0.6
Manufacture of beverages	C11	9.6	-1.0	-6.7	-1.3	4.7	4.3
Manufacture of tobacco products	C12	-8.5	-6.9	0.5	-11.9	-7.5	2.2
Manufacture of textiles	C13	5.0	-7.3	-13.1	-7.0	-3.3	7.4
Manufacture of wearing apparel	C14	-5.8	-7.8	-14.6	-9.2	-12.6	3.5
Manufacture of leather and related products	C15	3.1	-2.2	0.4	9.3	-5.9	-3.8
Manufacture of wood and of products of wood and cork, except furniture; manufacture of articles of straw and plaiting materials	C16	-11.0	-2.5	6.9	4.6	-8.2	1.1
Manufacture of paper and paper products	C17	-2.7	-2.7	8.5	-7.2	0.9	6.1
Printing and reproduction of recorded media	C18	2.7	8.5	6.0	0.8	-1.6	15.8
Manufacture of chemicals and chemical products	C20	21.4	3.8	1.4	-2.2	-7.1	8.0
Manufacture of basic pharmaceutical products and pharmaceutical preparations	C21	10.6	-5.5	20.8	7.5	7.2	6.7
Manufacture of rubber and plastic products	C22	12.2	5.8	1.0	3.4	4.5	4.4
Manufacture of other non-metallic mineral products	C23	3.8	-4.1	7.2	-0.8	10.7	22.2
Manufacture of basic metals	C24	0.3	-1.0	-9.5	13.0	-2.1	-9.6
Manufacture of fabricated metal products, except machinery and equipment	C25	10.5	12.7	5.4	-4.3	17.6	6.4
Manufacture of computer, electronic and optical products	C26	-4.0	17.3	2.9	12.8	7.7	14.3
Manufacture of electrical equipment	C27	11.7	9.4	17.9	9.8	19.1	5.0
Manufacture of machinery and equipment n.e.c.	C28	5.7	7.5	2.3	-4.6	3.9	7.5
Manufacture of motor vehicles, trailers and semi- trailers	C29	14.0	22.4	17.4	16.8	12.9	15.6
Manufacture of other transport equipment	C30	76.2	11.1	12.1	-22.5	32.4	7.5
Manufacture of furniture	C31	1.2	6.7	-2.3	8.8	-3.0	-1.3
Other manufacturing	C32	19.0	-0.5	-1.3	-0.2	21.8	18.6
Repair and installation of machinery and equipment	C33	19.7	11.6	26.7	5.7	19.3	4.5
Electricity, gas, steam and air conditioning supply	D	-3.4	-1.2	-0.5	7.3	4.7	3.0
Electricity, gas, steam and air conditioning supply	D35	-3.4	-1.2	-0.5	7.3	4.7	3.0

¹ Working day adjusted.



Table 3

**Industrial Production Indices
(Seasonally adjusted, 2010 = 100)**

NACE.BG - 2008	2014							2015					
	VI	VII	VIII	IX	X	XI	XII	I	II	III	IV	V	VI
B_TO_E36	105.2	106.3	105.6	107.4	108.3	108.4	109.6	111.4	110.6	109.1	109.5	110.2	110.9
B	96.3	94.9	97.4	93.3	95.7	97.5	100.5	101.2	102.6	96.4	99.4	100.3	102.2
B05	89.0	92.3	98.2	100.6	105.2	101.6	104.0	116.8	116.1	105.6	119.0	105.8	109.0
B07	101.4	96.3	94.7	86.7	98.1	102.1	103.0	84.6	89.2	86.8	83.4	94.0	99.2
B08	104.2	111.4	112.6	112.3	115.9	115.9	114.2	108.1	105.7	108.4	109.6	111.6	119.5
C	107.8	110.0	109.2	111.3	111.3	111.3	112.5	113.4	113.5	112.2	111.3	113.2	114.4
C10	88.2	89.9	89.8	88.9	90.6	92.9	91.8	94.2	96.8	87.4	91.9	88.0	87.8
C11	93.8	95.2	97.9	92.1	88.6	91.3	95.9	100.8	102.0	97.0	100.7	99.0	98.1
C12	88.9	106.8	103.5	109.0	116.9	115.0	120.3	109.0	112.6	111.0	103.5	98.7	97.8
C13	103.2	110.0	110.7	110.6	112.5	108.2	114.7	111.6	100.9	99.4	102.2	105.4	109.8
C14	97.5	97.0	99.4	96.4	97.8	94.8	94.0	96.0	92.0	89.0	91.5	91.4	96.3
C15	75.3	76.5	81.3	77.6	81.2	91.2	85.4	80.8	76.3	75.8	81.5	71.0	73.2
C16	98.2	102.3	98.7	90.4	98.8	92.7	97.1	99.4	104.1	105.4	101.5	93.6	99.5
C17	117.8	119.9	116.9	119.5	122.0	120.3	117.0	120.6	118.6	123.4	111.1	118.1	124.9
C18	103.7	105.1	96.7	103.9	105.8	109.8	106.6	112.2	114.8	114.1	107.8	106.4	118.3
C20	105.1	97.8	106.2	111.3	129.3	109.1	108.9	112.8	101.7	100.8	106.4	99.3	113.1
C21	129.9	136.6	121.4	132.2	140.2	138.5	152.2	153.6	135.9	153.3	150.5	143.7	141.9
C22	127.9	129.9	125.3	126.3	129.6	124.8	123.3	136.8	135.3	129.3	132.4	131.5	133.5
C23	107.8	115.8	115.9	111.7	112.6	115.4	119.2	116.1	117.6	120.5	117.6	127.4	130.0
C24	106.3	106.1	105.8	102.1	102.5	93.5	104.8	107.6	103.3	98.6	108.9	101.6	98.8
C25	111.8	119.4	113.0	130.4	118.4	124.7	121.2	126.6	128.8	111.5	112.6	121.5	119.3
C26	128.2	144.5	127.4	131.6	141.8	133.6	128.6	135.1	147.8	141.5	143.2	143.4	146.1
C27	123.0	124.8	121.0	126.0	131.9	130.6	128.3	139.3	140.1	144.7	140.5	145.2	133.4
C28	135.4	137.8	138.8	147.7	142.6	156.0	137.0	153.6	148.8	140.3	142.3	142.5	145.8
C29	132.0	134.4	129.7	141.7	151.8	149.0	153.0	155.1	159.3	155.4	151.7	147.5	153.3
C30	74.4	97.5	64.5	73.6	82.6	82.3	81.5	118.8	93.5	92.6	83.4	94.9	82.6
C31	121.3	125.7	132.2	124.0	125.1	124.7	117.5	126.6	130.3	119.6	130.8	120.4	120.8
C32	146.1	162.1	153.3	150.0	141.0	148.6	147.3	176.1	152.6	158.0	160.0	163.3	171.9
C33	84.5	88.0	89.9	93.4	85.4	105.6	77.4	98.0	91.7	97.8	83.8	93.8	88.8
D	103.3	102.4	100.0	104.1	107.0	107.0	107.2	112.5	107.7	107.7	110.8	108.0	106.5
D35	103.3	102.4	100.0	104.1	107.0	107.0	107.2	112.5	107.7	107.7	110.8	108.0	106.5



Table 4

Industrial Production Indices
(Working day adjusted, 2010 = 100)

NACE.BG - 2008	2012	2013	2014							2015					
	VI	VI	VI	VII	VIII	IX	X	XI	XII	I	II	III	IV	V	VI
B_TO_E36	109.7	104.7	105.3	109.9	102.4	107.6	113.3	115.6	113.5	106.2	104.2	109.6	107.1	105.0	111.2
B	101.1	89.7	91.1	93.9	96.1	95.4	111.8	107.7	110.7	98.1	94.6	89.6	92.2	93.9	97.1
B05	73.7	73.9	66.0	81.4	94.1	105.6	134.2	115.6	124.8	132.4	114.8	94.3	105.4	88.7	85.4
B07	112.7	95.0	101.4	96.3	94.7	86.7	98.1	102.1	103.0	84.6	89.2	86.8	83.4	94.0	99.2
B08	131.5	119.6	113.6	125.4	125.7	125.2	136.5	131.2	116.1	68.3	73.4	97.0	109.2	117.4	131.9
C	117.4	110.8	113.2	117.9	107.0	114.3	118.0	117.5	108.5	99.1	102.1	111.3	112.4	112.6	120.4
C10	95.9	96.9	90.6	91.3	92.6	96.1	99.7	99.5	96.0	78.8	83.5	85.8	88.6	86.0	90.0
C11	124.5	131.2	115.3	117.1	123.3	100.2	77.0	81.8	101.5	63.4	69.9	91.4	102.0	111.0	120.2
C12	173.3	139.2	103.5	128.2	104.7	121.5	112.3	108.0	119.0	79.1	89.0	115.7	102.9	103.6	105.7
C13	93.9	111.2	114.2	114.4	89.6	106.1	112.2	110.2	100.4	97.4	95.8	111.4	112.5	117.6	122.6
C14	108.5	102.7	101.7	108.2	103.0	91.3	93.7	95.0	93.1	98.7	91.2	85.1	84.7	83.9	105.3
C15	108.2	75.0	78.9	91.2	82.2	83.7	84.7	93.4	79.5	81.5	73.3	74.0	69.9	59.3	75.8
C16	114.8	106.6	107.3	114.3	101.7	97.5	111.3	101.7	89.1	79.3	86.6	102.4	99.6	92.2	108.4
C17	115.0	121.7	123.8	127.9	117.6	120.7	118.9	116.4	110.4	113.3	110.7	129.3	114.0	121.0	131.4
C18	94.1	103.1	104.5	104.7	93.5	106.9	113.6	120.3	121.1	96.0	103.2	111.7	105.7	103.9	121.0
C20	111.9	99.6	109.2	97.8	99.7	111.3	127.4	112.9	107.5	105.0	94.9	110.6	110.7	99.5	117.9
C21	146.7	135.1	137.9	128.1	108.2	132.5	151.9	143.1	157.1	137.0	134.5	160.1	158.3	140.6	147.1
C22	118.3	116.9	139.1	143.8	127.2	135.0	144.0	130.5	105.8	115.2	117.9	127.6	132.2	132.1	145.1
C23	116.8	116.9	115.6	125.5	123.3	120.5	126.1	125.2	101.0	81.8	96.7	117.5	123.6	140.3	141.4
C24	99.5	87.0	103.2	126.0	100.4	94.3	115.5	97.9	79.5	112.6	102.8	89.8	122.0	105.2	93.3
C25	105.1	114.9	118.9	124.7	110.7	134.4	124.0	134.8	136.7	94.3	114.8	111.2	110.0	118.3	126.5
C26	150.6	112.5	133.7	146.4	111.4	134.1	144.2	141.8	147.5	119.4	136.0	147.0	140.3	144.0	152.7
C27	143.6	132.9	132.3	130.7	105.6	127.0	144.7	144.5	120.1	130.5	132.7	149.9	141.5	142.1	138.9
C28	144.0	137.1	145.2	144.5	125.1	150.1	146.5	166.2	129.5	135.4	143.0	148.6	144.8	139.6	156.1
C29	90.1	112.2	140.8	134.9	108.6	143.7	163.5	164.9	135.1	150.4	153.4	163.8	155.8	146.3	162.8
C30	173.9	87.0	85.3	105.2	49.7	63.3	78.1	74.6	85.4	95.1	86.0	101.4	87.8	116.1	91.7
C31	121.2	122.8	126.6	129.3	136.4	128.2	138.3	135.8	120.0	106.7	115.5	115.4	126.3	117.0	125.0
C32	140.2	171.1	165.8	164.9	156.6	159.4	164.1	156.3	125.8	147.1	130.9	160.1	156.9	164.0	196.7
C33	94.0	69.9	85.1	86.4	90.0	98.1	90.9	122.9	105.2	69.5	78.4	97.0	74.2	85.9	88.9
D	89.3	92.8	88.4	94.0	90.4	92.5	101.9	116.3	134.1	134.5	118.2	117.0	100.7	88.3	91.0
D35	89.3	92.8	88.4	94.0	90.4	92.5	101.9	116.3	134.1	134.5	118.2	117.0	100.7	88.3	91.0