

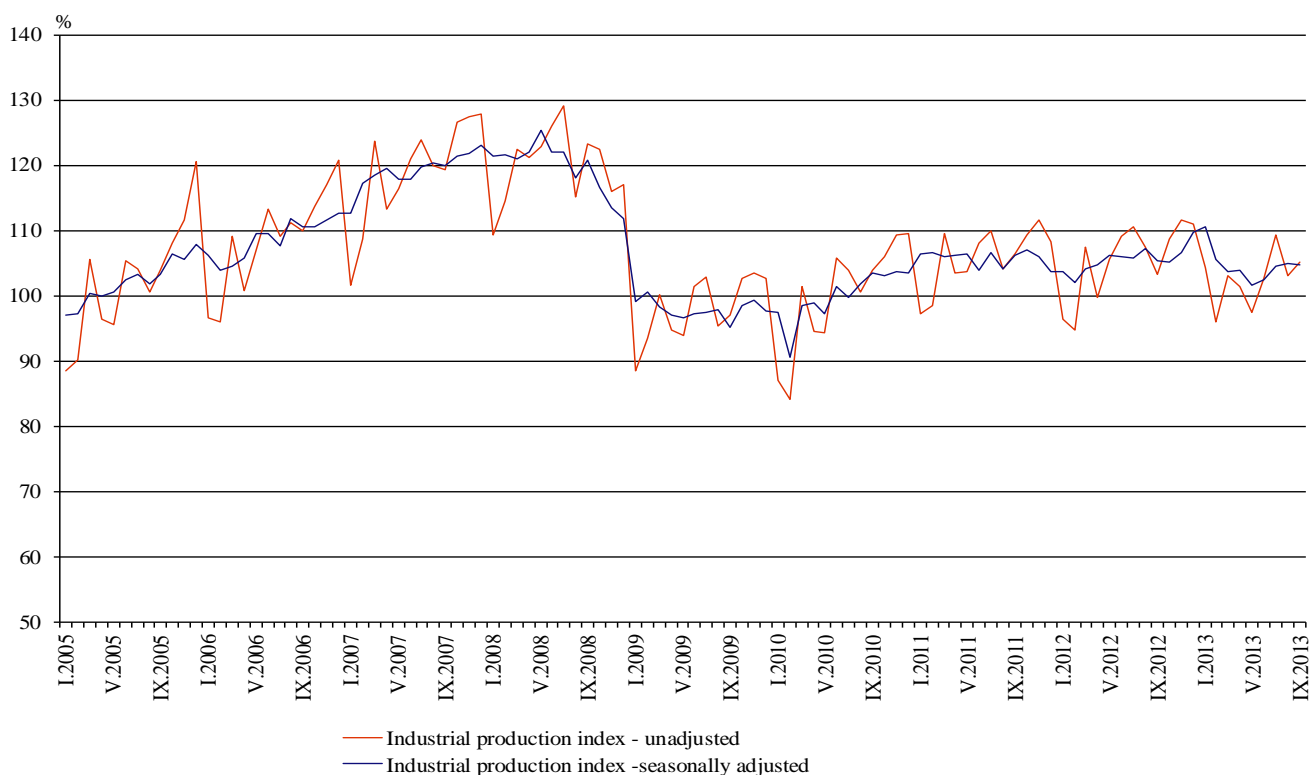


## INDUSTRIAL PRODUCTION INDICES IN SEPTEMBER 2013<sup>1</sup>

According to the preliminary data Industrial Production Index<sup>2</sup>, seasonally adjusted<sup>3</sup>, decreased by 0.1% in September 2013 as compared to August 2013.

In September 2013 working day adjusted<sup>4</sup> Industrial Production Index rose by 0.5% in comparison with the same month of 2012.

**Figure 1. Industrial Production Indices (2010=100)**



<sup>1</sup> September 2013 data are preliminary.

<sup>2</sup> Monthly Industrial Production and Industrial turnover indices measure changes in production and turnover values of industrial enterprises. This information can be used to assess the current economic development and for short-term forecasts. Indices do not measure the actual production level, it aims to measure the average change in value of production between two points of time. Indices are compiled on the basis of information collected through representative sampling survey on industrial enterprises. The sample covers enterprises with annual turnover more than 97% of total turnover in industry.

Industrial production indices are calculated at constant base year that is to say they are weighted with the structure of the value added at factor costs in the base year.

<sup>3</sup> Seasonal adjustment is a statistical method, which eliminates the seasonal component of time series.

<sup>4</sup> Working day adjustment is an adjustment for variations caused by calendar effects, different number of calendar and working days in the months, national holidays and outliers (for example the presence of more non-working days in May could contribute to the decline in the production in some activities).

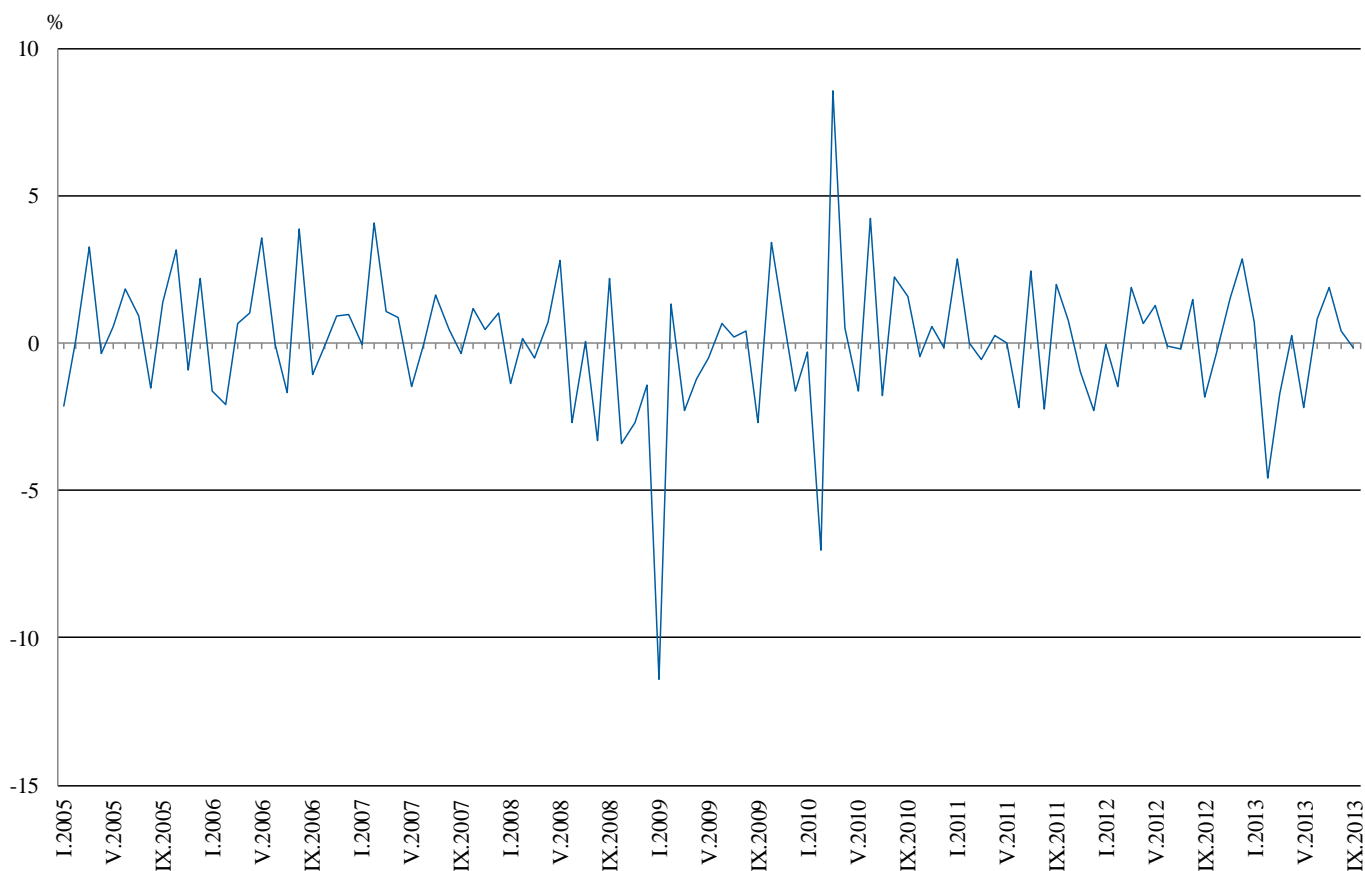


## Monthly comparisons

In September 2013 as compared to August 2013, the seasonally adjusted Industrial Production Index decreased in the mining and quarrying industry by 3.1% and in the manufacturing by 0.1%, while in the electricity, gas, steam and air conditioning supply an increase by 1.6% was seen.

The most significant decreases of production in the manufacturing were registered in the manufacture of chemicals and chemical products by 14.4%, in the manufacture of electrical equipment by 7.7%, in the manufacture of tobacco products by 7.5%, in the manufacture of other non-metallic mineral products by 3.7%. There was increase in the manufacture of motor vehicles, trailers and semi-trailers by 8.6%, in the manufacture of machinery and equipment by 5.7%, in the manufacture of rubber and plastic products by 5.1%, in the manufacture of beverages by 4.8%, in the manufacture of food products by 3.2%.

**Figure 2. Changes of Industrial Production Indices compared to the previous month**  
(Seasonally adjusted)



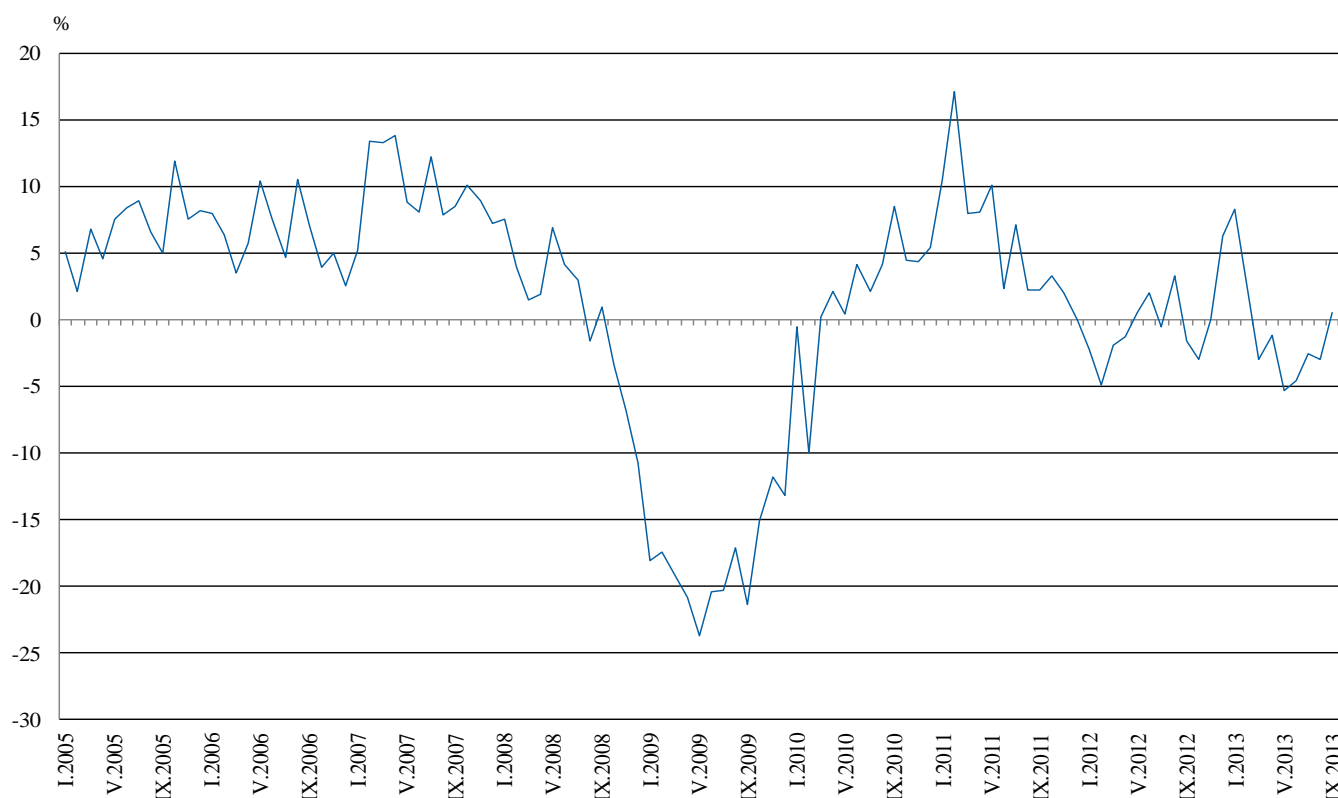


## Annual comparisons

On annual basis in September 2013 Industrial Production Index, calculated from working day adjusted data increased in the electricity, gas, steam and air conditioning supply by 1.9% and in the manufacturing by 1.8%, while in the mining and quarrying industry a decrease by 11.2% was registered.

In the manufacturing, the more significant increases compared to the same month of the previous year were seen in the manufacture of textiles by 21.7%, in the printing and reproduction of recorded media by 18.9%, in the manufacture of motor vehicles, trailers and semi-trailers by 16.6%, in the manufacture of machinery and equipment by 15.0%, in the manufacture of fabricated metal products, except machinery and equipment by 10.6%. Decreases were registered in the manufacture of chemicals and chemical products by 22.7%, in the manufacture of other transport equipment by 18.1%, in the manufacture of tobacco products by 9.3%, in the manufacture of computer, electronic and optical products by 4.8%.

**Figure 3. Changes of Industrial Production Indices compared to the same month of the previous year**  
(Working day adjusted)



The final data on Industrial Production and Turnover Indices for August 2013 can be found in NSI internet web-site: (<http://www.nsi.bg/otrasalen.php?otr=46>).

## Annex

Table 1

### Changes of Industrial Production Indices compared to the previous month<sup>1</sup>

(Per cent)

Economic Activities	NACE.BG - 2008 Code	2013					
		IV	V	VI	VII	VIII	IX
<b>Industry</b>	<b>B_TO_E36</b>	<b>0.3</b>	<b>-2.2</b>	<b>0.8</b>	<b>1.9</b>	<b>0.4</b>	<b>-0.1</b>
<b>Mining and quarrying</b>	<b>B</b>	<b>0.5</b>	<b>1.3</b>	<b>6.1</b>	<b>1.3</b>	<b>9.0</b>	<b>-3.1</b>
of which:							
Mining of coal and lignite	B05	31.5	-23.4	44.9	-11.3	32.1	-5.7
Mining of metal ores	B07	-10.7	11.0	-4.1	7.9	-3.7	3.1
Other mining and quarrying	B08	5.9	3.7	-6.3	-1.4	8.3	-10.0
<b>Manufacturing</b>	<b>C</b>	<b>2.0</b>	<b>-3.8</b>	<b>0.8</b>	<b>2.7</b>	<b>-0.4</b>	<b>-0.1</b>
of which:							
Manufacture of food products	C10	5.2	-4.2	8.1	-0.5	-8.9	3.2
Manufacture of beverages	C11	3.4	6.5	-1.3	-7.8	4.8	4.8
Manufacture of tobacco products	C12	2.7	-13.6	-8.6	2.8	10.0	-7.5
Manufacture of textiles	C13	2.1	-2.4	-1.2	-1.7	7.7	1.4
Manufacture of wearing apparel	C14	6.9	-7.5	-0.2	2.4	3.2	-3.2
Manufacture of leather and related products	C15	8.6	-11.2	-2.8	3.4	0.9	1.7
Manufacture of wood and of products of wood and cork, except furniture; manufacture of articles of straw and plaiting materials	C16	4.7	-8.2	-1.5	0.0	-2.8	1.8
Manufacture of paper and paper products	C17	0.0	-2.9	-4.1	5.0	0.2	-0.3
Printing and reproduction of recorded media	C18	15.6	-4.8	-10.1	5.2	-6.3	3.4
Manufacture of chemicals and chemical products	C20	4.0	4.7	-7.3	2.6	-5.0	-14.4
Manufacture of basic pharmaceutical products and pharmaceutical preparations	C21	4.1	-0.9	-9.8	6.2	-0.1	0.1
Manufacture of rubber and plastic products	C22	9.6	-4.8	-2.2	4.1	-3.0	5.1
Manufacture of other non-metallic mineral products	C23	5.5	-3.0	-4.9	2.2	8.0	-3.7
Manufacture of basic metals	C24	2.0	0.9	-1.5	5.5	2.8	1.3
Manufacture of fabricated metal products, except machinery and equipment	C25	-3.9	-2.5	8.2	5.6	-4.7	-3.5
Manufacture of computer, electronic and optical products	C26	14.7	-8.3	-12.5	21.9	-8.1	-4.2
Manufacture of electrical equipment	C27	0.1	4.2	8.3	-4.2	7.7	-7.7
Manufacture of machinery and equipment n.e.c.	C28	1.1	-6.2	-3.7	4.8	-0.7	5.7
Manufacture of motor vehicles, trailers and semi-trailers	C29	3.1	-8.5	13.5	3.2	-8.5	8.6
Manufacture of other transport equipment	C30	19.2	-24.8	11.6	-0.9	-4.1	-2.2
Manufacture of furniture	C31	4.9	-8.1	3.0	-1.3	4.5	-0.4
Other manufacturing	C32	-6.7	-6.2	10.6	1.4	-2.0	-5.0
Repair and installation of machinery and equipment	C32	4.8	-11.6	-6.1	4.3	0.0	1.8
<b>Electricity, gas, steam and air conditioning supply</b>	<b>D</b>	<b>-6.8</b>	<b>3.9</b>	<b>1.8</b>	<b>1.0</b>	<b>-1.0</b>	<b>1.6</b>
Electricity, gas, steam and air conditioning supply	D35	-6.8	3.9	1.8	1.0	-1.0	1.6

<sup>1</sup> Seasonally adjusted.



Table 2

**Changes of Industrial Production Indices compared to the same month of the previous year<sup>1</sup>**  
(Per cent)

Economic Activities	NACE.BG -2008 Code	2013					
		IV	V	VI	VII	VIII	IX
<b>Industry</b>	<b>B_TO_E36</b>	<b>-1.2</b>	<b>-5.3</b>	<b>-4.6</b>	<b>-2.6</b>	<b>-2.9</b>	<b>0.5</b>
<b>Mining and quarrying</b>	<b>B</b>	<b>-13.1</b>	<b>-15.0</b>	<b>-11.6</b>	<b>-16.3</b>	<b>-7.4</b>	<b>-11.2</b>
of which:							
Mining of coal and lignite	B05	-29.3	-58.9	-0.5	-32.8	-4.5	-14.4
Mining of metal ores	B07	-9.2	18.3	-16.5	5.1	-2.1	2.5
Other mining and quarrying	B08	8.5	19.2	-8.9	-23.3	-2.4	-17.2
<b>Manufacturing</b>	<b>C</b>	<b>1.7</b>	<b>-4.5</b>	<b>-4.7</b>	<b>1.3</b>	<b>-0.5</b>	<b>1.8</b>
of which:							
Manufacture of food products	C10	-4.3	-7.3	1.3	-0.7	-10.5	-2.9
Manufacture of beverages	C11	-1.0	9.7	5.7	-5.6	3.1	8.2
Manufacture of tobacco products	C12	33.4	-5.8	-19.2	-14.2	11.5	-9.3
Manufacture of textiles	C13	12.6	18.6	18.3	20.0	22.1	21.7
Manufacture of wearing apparel	C14	12.7	4.3	-5.0	4.6	8.1	6.5
Manufacture of leather and related products	C15	7.9	-18.9	-30.1	-16.7	-19.5	-4.7
Manufacture of wood and of products of wood and cork, except furniture; manufacture of articles of straw and plaiting materials	C16	8.5	-10.5	-7.1	-7.0	-5.7	0.3
Manufacture of paper and paper products	C17	8.8	7.5	7.0	7.6	11.5	8.0
Printing and reproduction of recorded media	C18	28.7	22.7	9.7	20.1	18.0	18.9
Manufacture of chemicals and chemical products	C20	7.8	-6.7	-10.8	1.6	-7.4	-22.7
Manufacture of basic pharmaceutical products and pharmaceutical preparations	C21	14.2	13.9	-6.0	-5.8	5.4	-0.8
Manufacture of rubber and plastic products	C22	12.0	4.1	-1.3	10.2	-0.3	8.2
Manufacture of other non-metallic mineral products	C23	4.7	7.1	0.0	-0.3	9.8	8.0
Manufacture of basic metals	C24	-15.2	0.8	-12.4	3.2	17.7	4.8
Manufacture of fabricated metal products, except machinery and equipment	C25	1.8	-14.3	8.0	18.9	8.4	10.6
Manufacture of computer, electronic and optical products	C26	0.3	-8.4	-25.4	18.8	5.7	-4.8
Manufacture of electrical equipment	C27	-5.9	-2.5	6.7	2.4	18.0	3.4
Manufacture of machinery and equipment n.e.c.	C28	10.2	0.2	-4.8	5.6	-2.1	15.0
Manufacture of motor vehicles, trailers and semi-trailers	C29	23.6	11.1	25.5	28.9	15.7	16.6
Manufacture of other transport equipment	C30	-26.5	-35.1	-50.5	-22.7	-10.0	-18.1
Manufacture of furniture	C31	18.7	-2.7	1.6	0.1	3.6	0.3
Other manufacturing	C32	15.0	4.7	23.2	26.3	9.2	3.3
Repair and installation of machinery and equipment	C33	-4.2	-25.7	-25.4	-9.9	-25.4	3.6
<b>Electricity, gas, steam and air conditioning supply</b>	<b>D</b>	<b>-2.6</b>	<b>-2.7</b>	<b>0.3</b>	<b>-8.0</b>	<b>-9.2</b>	<b>1.9</b>
Electricity, gas, steam and air conditioning supply	D35	-2.6	-2.7	0.3	-8.0	-9.2	1.9

<sup>1</sup> Working day adjusted

Table 3

**Industrial Production Indices**  
(Seasonally adjusted, 2010=100)

NACE.BG - 2008 Code	2012				2013								
	IX	X	XI	XII	I	II	III	IV	V	VI	VII	VIII	IX
<b>B_TO_E36</b>	<b>105.3</b>	<b>105.0</b>	<b>106.7</b>	<b>109.7</b>	<b>110.6</b>	<b>105.5</b>	<b>103.7</b>	<b>103.9</b>	<b>101.7</b>	<b>102.5</b>	<b>104.4</b>	<b>104.9</b>	<b>104.8</b>
<b>B</b>	<b>112.7</b>	<b>110.8</b>	<b>82.3</b>	<b>109.9</b>	<b>102.0</b>	<b>96.4</b>	<b>86.1</b>	<b>86.5</b>	<b>87.6</b>	<b>93.0</b>	<b>94.2</b>	<b>102.8</b>	<b>99.5</b>
<b>B05</b>	117.3	108.5	83.5	116.1	103.6	91.0	61.2	80.4	61.6	89.3	79.2	104.6	98.6
<b>B07</b>	98.1	108.3	78.3	112.7	91.1	94.6	98.7	88.2	97.9	93.9	101.3	97.6	100.6
<b>B08</b>	126.1	123.6	124.0	103.3	97.3	101.3	106.4	112.7	116.8	109.5	108.0	116.9	105.2
<b>C</b>	<b>103.9</b>	<b>104.5</b>	<b>105.8</b>	<b>105.6</b>	<b>109.2</b>	<b>107.4</b>	<b>104.5</b>	<b>106.6</b>	<b>102.6</b>	<b>103.4</b>	<b>106.2</b>	<b>105.8</b>	<b>105.7</b>
<b>C10</b>	90.9	92.5	91.9	91.3	92.9	87.1	86.7	91.2	87.4	94.5	94.0	85.6	88.4
<b>C11</b>	100.0	102.5	97.6	89.6	108.5	97.8	96.6	99.8	106.3	104.9	96.6	101.3	106.2
<b>C12</b>	133.8	83.3	78.2	115.4	119.7	127.5	146.6	150.5	130.0	118.8	122.2	134.5	124.3
<b>C13</b>	87.3	90.0	95.2	102.8	107.4	95.7	99.2	101.3	98.8	97.6	95.9	103.3	104.7
<b>C14</b>	91.0	89.8	96.7	96.0	100.4	99.7	97.0	103.7	96.0	95.8	98.1	101.3	98.0
<b>C15</b>	82.0	74.5	81.8	73.7	80.2	76.0	76.8	83.4	74.1	72.0	74.4	75.1	76.4
<b>C16</b>	95.2	100.5	101.2	91.0	104.2	99.9	102.5	107.3	98.5	97.0	97.0	94.3	96.0
<b>C17</b>	106.2	103.3	106.8	110.2	110.0	117.6	120.0	119.9	116.4	111.6	117.2	117.4	117.0
<b>C18</b>	85.3	84.9	100.7	93.6	94.8	95.8	99.9	115.6	110.0	98.8	104.0	97.5	100.8
<b>C20</b>	102.5	98.6	97.4	95.2	104.2	97.0	95.4	99.2	103.9	96.3	98.8	93.9	80.3
<b>C21</b>	132.7	125.0	121.2	122.4	139.9	136.1	135.1	140.6	139.4	125.7	133.5	133.3	133.4
<b>C22</b>	105.5	105.0	110.1	95.4	115.8	117.2	105.7	115.8	110.2	107.8	112.2	108.8	114.4
<b>C23</b>	104.0	111.2	118.9	105.6	117.4	108.8	108.7	114.7	111.3	105.8	108.1	116.8	112.5
<b>C24</b>	95.0	92.6	95.9	90.4	148.5	91.0	91.4	93.2	94.1	92.7	97.8	100.5	101.8
<b>C25</b>	93.3	104.2	103.0	102.4	111.7	97.1	103.8	99.7	97.1	105.1	110.9	105.7	102.0
<b>C26</b>	118.3	104.2	130.2	105.1	124.1	143.5	115.9	132.9	121.9	106.7	130.0	119.4	114.5
<b>C27</b>	127.1	129.7	129.4	141.0	130.9	125.4	121.8	121.9	127.0	137.6	131.8	141.8	131.0
<b>C28</b>	120.1	119.6	122.9	125.1	132.8	130.6	136.6	138.1	129.6	124.8	130.8	129.9	137.4
<b>C29</b>	94.7	92.8	94.6	81.6	96.6	103.4	98.2	101.2	92.6	105.1	108.5	99.3	107.9
<b>C30</b>	80.0	114.2	77.9	95.3	122.1	100.0	71.6	85.4	64.2	71.6	70.9	68.0	66.5
<b>C31</b>	118.7	115.5	116.5	116.9	126.8	126.5	117.2	123.0	113.0	116.4	114.9	120.1	119.6
<b>C32</b>	138.0	137.1	121.6	120.5	141.9	148.6	156.7	146.3	137.2	151.9	154.0	151.0	143.4
<b>C33</b>	71.0	94.2	104.9	96.4	85.6	86.0	79.7	83.5	73.8	69.4	72.4	72.4	73.7
<b>D</b>	<b>105.1</b>	<b>104.3</b>	<b>116.0</b>	<b>124.2</b>	<b>122.9</b>	<b>102.1</b>	<b>106.0</b>	<b>98.8</b>	<b>102.6</b>	<b>104.5</b>	<b>105.5</b>	<b>104.4</b>	<b>106.0</b>
<b>D35</b>	105.1	104.3	116.0	124.2	122.9	102.1	106.0	98.8	102.6	104.5	105.5	104.4	106.0

Table 4

## Industrial Production Indices

(Working day adjusted, 2010=100)

NACE.BG - 2008 Code	2010	2011	2012				2013								
	IX	IX	IX	X	XI	XII	I	II	III	IV	V	VI	VII	VIII	IX
<b>B_TO_E36</b>	<b>103.9</b>	<b>106.3</b>	<b>104.6</b>	<b>107.6</b>	<b>110.7</b>	<b>113.7</b>	<b>103.6</b>	<b>96.3</b>	<b>103.5</b>	<b>100.7</b>	<b>98.2</b>	<b>104.5</b>	<b>107.9</b>	<b>103.2</b>	<b>105.2</b>
<b>B</b>	<b>105.1</b>	<b>113.2</b>	<b>116.5</b>	<b>124.3</b>	<b>89.4</b>	<b>117.9</b>	<b>95.3</b>	<b>89.9</b>	<b>83.5</b>	<b>80.9</b>	<b>83.1</b>	<b>89.3</b>	<b>94.3</b>	<b>101.6</b>	<b>103.5</b>
<b>B05</b>	107.2	122.9	123.6	130.7	96.9	128.9	110.4	87.8	49.9	58.0	43.1	73.3	74.5	103.2	105.8
<b>B07</b>	100.7	103.9	98.1	108.3	78.3	112.7	91.1	94.6	98.7	88.2	97.9	93.9	101.3	97.6	100.6
<b>B08</b>	114.5	93.8	139.6	143.2	140.1	109.9	62.7	72.6	95.9	109.7	123.9	119.7	119.6	128.5	115.6
<b>C</b>	<b>107.9</b>	<b>110.9</b>	<b>106.8</b>	<b>109.3</b>	<b>110.3</b>	<b>101.7</b>	<b>93.5</b>	<b>92.6</b>	<b>103.5</b>	<b>108.1</b>	<b>105.2</b>	<b>111.7</b>	<b>114.2</b>	<b>106.1</b>	<b>108.7</b>
<b>C10</b>	113.7	102.3	98.5	101.8	97.9	95.6	77.7	75.1	85.4	87.8	85.8	97.1	95.5	88.5	95.7
<b>C11</b>	108.7	111.9	109.6	94.3	89.6	93.0	69.4	63.2	89.4	97.0	119.9	131.8	119.8	125.6	118.6
<b>C12</b>	112.6	109.1	139.7	98.5	86.2	111.4	89.5	95.2	142.2	141.6	136.6	139.8	137.5	137.1	126.7
<b>C13</b>	100.7	96.5	82.3	89.1	100.4	90.8	91.7	91.8	110.5	111.8	110.7	111.0	100.2	83.0	100.1
<b>C14</b>	101.9	101.7	88.0	87.3	96.2	97.5	101.7	99.1	93.8	99.2	87.3	102.9	111.9	103.0	93.7
<b>C15</b>	111.9	112.9	89.9	74.4	79.7	65.9	79.4	71.8	75.3	71.7	65.4	75.5	89.6	77.8	85.7
<b>C16</b>	114.9	115.9	105.5	114.4	111.5	86.6	80.1	78.9	96.8	104.8	98.9	106.4	108.7	97.3	105.9
<b>C17</b>	115.8	113.2	109.1	98.2	102.5	105.3	100.3	110.6	126.9	125.9	121.2	123.5	129.4	118.7	117.8
<b>C18</b>	115.5	94.2	89.1	93.4	112.7	107.6	79.4	84.7	95.0	111.9	106.9	103.2	104.1	100.1	105.9
<b>C20</b>	111.2	114.7	103.3	95.9	100.6	94.2	97.2	91.2	105.2	102.6	104.3	99.8	99.3	88.3	79.9
<b>C21</b>	107.0	112.4	134.9	136.3	126.4	120.1	112.9	137.4	139.2	140.1	139.3	137.4	125.2	127.8	133.8
<b>C22</b>	113.6	112.7	113.0	117.8	118.7	86.7	93.8	98.4	104.2	113.6	110.1	116.4	123.4	111.9	122.3
<b>C23</b>	115.4	127.0	113.7	126.1	129.3	88.6	83.1	86.9	104.7	120.2	120.7	116.8	116.6	123.7	122.8
<b>C24</b>	99.3	88.0	89.4	97.5	109.8	68.3	139.2	88.8	89.0	104.4	101.5	87.2	116.8	94.9	93.7
<b>C25</b>	107.4	124.9	95.2	104.8	108.8	120.7	81.5	85.5	106.9	99.3	96.3	113.3	115.7	106.7	105.2
<b>C26</b>	103.5	115.3	125.4	104.9	136.9	129.9	106.2	127.1	118.0	130.7	122.0	111.8	129.3	106.8	119.4
<b>C27</b>	115.4	107.3	131.2	140.9	140.5	136.3	114.0	111.1	118.3	121.0	123.1	152.9	139.7	130.5	135.8
<b>C28</b>	107.9	121.2	120.9	123.7	126.9	119.2	112.7	123.8	147.1	138.4	130.8	136.9	139.7	119.6	139.1
<b>C29</b>	103.0	83.4	95.8	99.1	105.4	75.6	89.8	96.8	101.7	104.8	93.9	112.8	110.7	86.6	111.6
<b>C30</b>	91.6	94.7	77.5	99.9	67.5	102.1	77.6	82.0	71.8	79.3	79.2	85.8	72.2	62.2	63.5
<b>C31</b>	115.3	117.0	122.4	126.3	125.9	123.8	105.3	110.0	116.0	118.2	111.0	122.9	117.7	121.1	122.7
<b>C32</b>	106.5	114.7	149.3	160.3	128.7	109.5	115.1	128.2	154.6	141.3	140.3	172.6	153.6	154.4	154.3
<b>C33</b>	90.4	125.5	73.6	98.6	116.9	133.0	58.5	72.2	78.1	76.2	68.3	70.0	70.9	72.5	76.2
<b>D</b>	<b>89.9</b>	<b>88.6</b>	<b>92.1</b>	<b>98.3</b>	<b>124.6</b>	<b>149.7</b>	<b>141.9</b>	<b>112.3</b>	<b>115.5</b>	<b>89.2</b>	<b>84.4</b>	<b>89.6</b>	<b>96.0</b>	<b>94.4</b>	<b>93.9</b>
<b>D35</b>	89.9	88.6	92.1	98.3	124.6	149.7	141.9	112.3	115.5	89.2	84.4	89.6	96.0	94.4	93.9